

SPECIFICATION LED Linear light

Picture:



Product Feature:

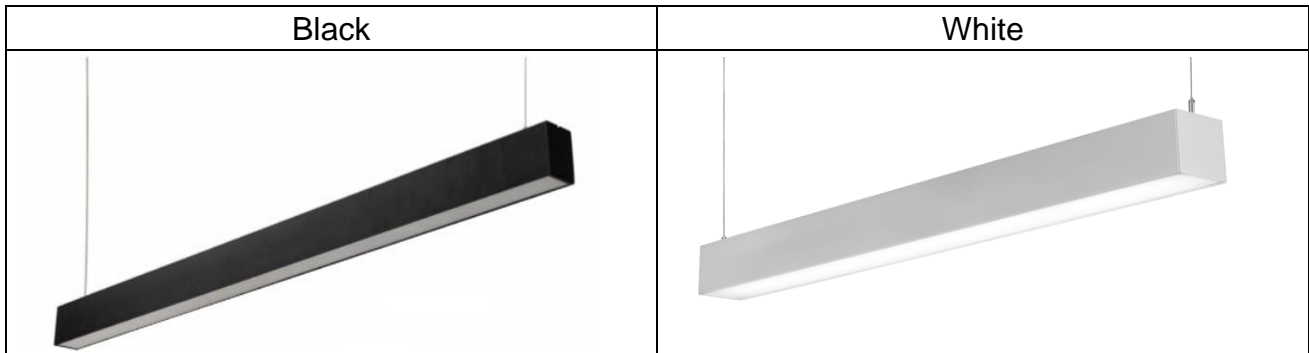
- ◆ Long led life: more than 50,000hours.
- ◆ Low heat, less than 60°C. No UV or IR light radiation. No mercury or other inorganic.
- ◆ Homogeneous flood illumination. Machined aluminium heat fins with excellent thermal efficiencies.
- ◆ The led linear light is CCT changeable: 3000k-4000k-6000k or 3000k-4000k-5000k.
- ◆ 3 years limited warranty. Works with 110VAC/220VAC.

Parameter:

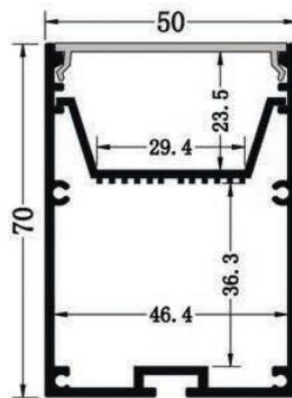
Model	LLD.HUNTER.5070-1.2M(Black/White)	LLD.HUNTER.5070-1.8M(Black/White)
Power	40W	60W
Spec	Led Linear Light Input: AC220-240V 50/60Hz Led Chip: San'an CCT:3000K-4000K-5000K Ra>80 Lm/w: 120-130m/w Beam Angle:140° Color: White/Black IP rating: IP20 Housing: PC+ Aluminium Driver: Boke flicker-free driver Warranty:3 years Cable:3m length	Led Linear Light Input: AC220-240V 50/60Hz Led Chip: San'an CCT:3000K-4000K-5000K Ra>80 Lm/w: 120-130m/w Beam Angle:140° Color: White/Black IP rating: IP20 Housing: PC+ Aluminium Driver: Boke flicker-free driver Warranty:3 years Cable:3m length

SPECIFICATION LED Linear light

Product:



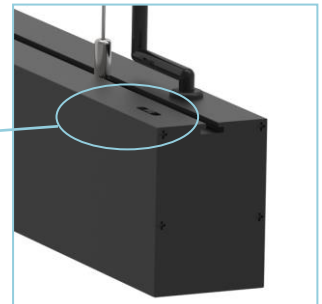
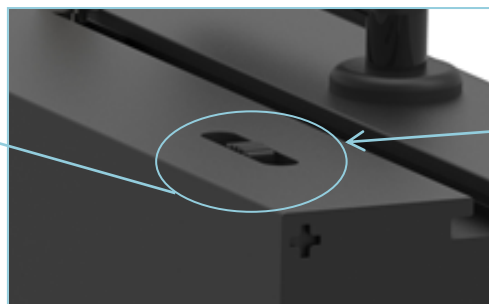
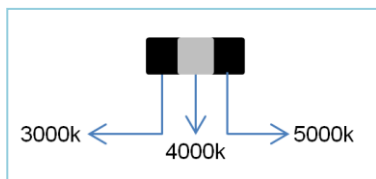
Dimension:



Model	Power	Size
LLD.HUNTER.5070-1.2M	40W	1200*50*70mm
LLD.HUNTER.5070-1.8M	60W	1800*50*70mm

CCT changeable:

Use switch to adjust the CCT colour.



SPECIFICATION LED Linear light

Package:

Model	Qty/carton	Size/Carton	Weight/Carton
LLD.HUNTER.5070-1.2M	8pcs	1310x300x210mm	24.5kg
LLD.HUNTER.5070-1.8M	6pcs	1920x230x230mm	27kg

Applicant:

Office lighting, retail store lighting, commercial lighting, residential lighting, general lighting, energy saving programs, sustainable energy etc.

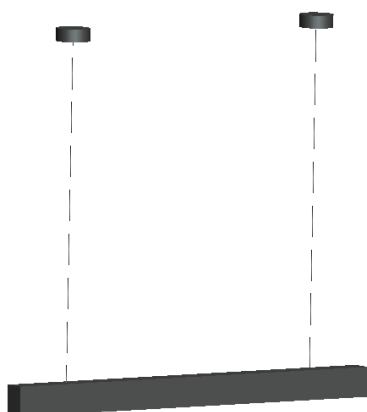


Installation:

1. Pendant type-Hanging cable

- Step 1: Dimension diagram of hanging cable installation on ceiling.
- Step 2: Fix the hanging cable on the lamp body.
- Step 3: Adjust hanging cable length, then connect driver AC cable

SPECIFICATION LED Linear light

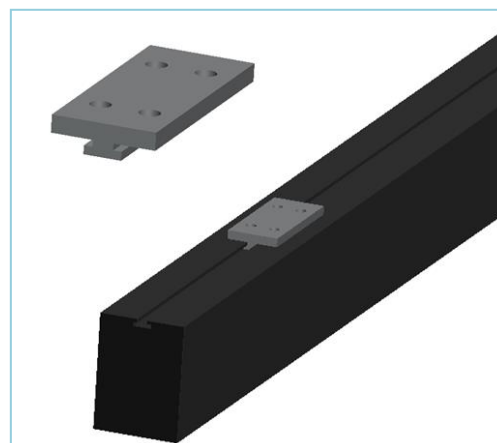
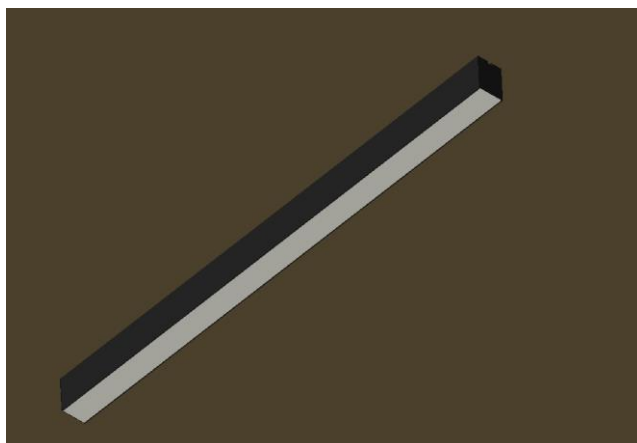


2. Surface mounted type

Step 1: Dimension diagram of surface clips installation on ceiling.

Step 2: Push the lamp body to fixed chips.

Step 3: Connect driver AC cable, installation finish.

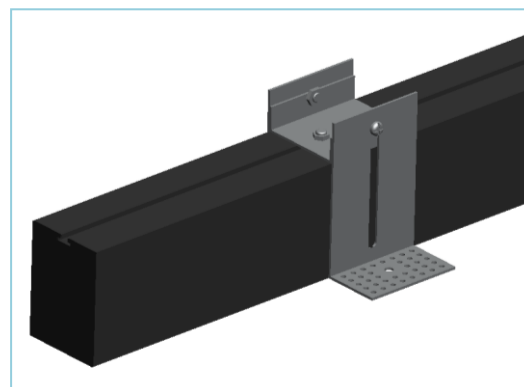
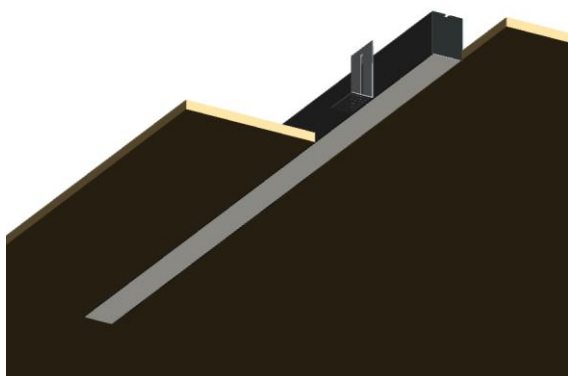


3. Recessed Mounted type

Step 1: Chamfer a hole in the ceiling according to the length of 50*70mm.

Step 2: Fix the recessed clip with light body, and put into the ceiling hole.

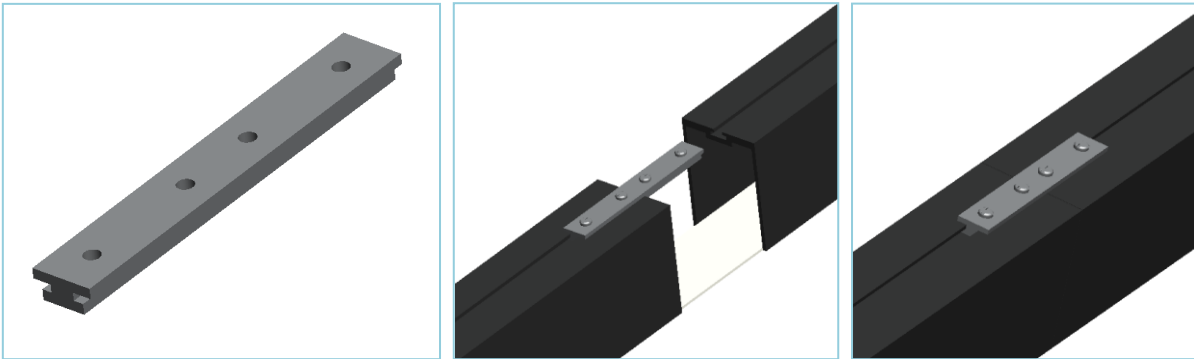
Step 3: Connect driver AC cable, installation finish.



Connector:

Seamless connection only for special project, The normal angle 180° , customized for your project by design drawings and dimensions.

180 degree



Attention:

- ◆ As related voltage is AC220-240V 50/60Hz, any operation under high or low voltage for long time will cause abnormal function and life shortage.
- ◆ Under any cases, LED light is not allowed to be installed in flammable object and covered by insulation blanket or similar material.
- ◆ Before installation and replacement of fluorescent track light, power must be cut off to keep people safe.
- ◆ When the lamp (self-extinguishing, abnormal blinking), please check the power supply voltage whether it is normal, if normal, some fault in the lamp, need to replace it with new one.
- ◆ The luminaire shall be installed by a qualified electrician and wired in accordance with the latest IEE electrical regulations or the national requirements.

Maintenance:

- ◆ In order to ensure optimum performance, please clean the product regularly (recommended twice a year, when cleaning the product, please use soft cotton cloth only.
- ◆ Do not use chemical solvents to clean the luminaire, it might damage the surface.